

REFER TO CIVIL DRAWINGS FOR ADDITIONAL ENTRANCE INFORMATION

[illegible]

2203

LOCATED AT:
950 N POWERLINE ROAD,
POMPANO BEACH FL 33069

DEJOURS LEVIZO & ASSOCIATES
1248 S ALHAMBRA CIRCLE
CORAL GABLES, FL 33146
(786) 554-9035
ALIA 38052598
WWW.BURGOSLANZA.COM
PABLO BURGOS ARCHITECT AR 0095205
CARLOS LANZA ARCHITECT AR 0016081
S LANZA ARCHITECTS AND ARE
EXPRESS WRITTEN CONSENT OF THE SAME

BURGOS
LANZA
ARCHITECTS & PLANNERS
AA 26001519

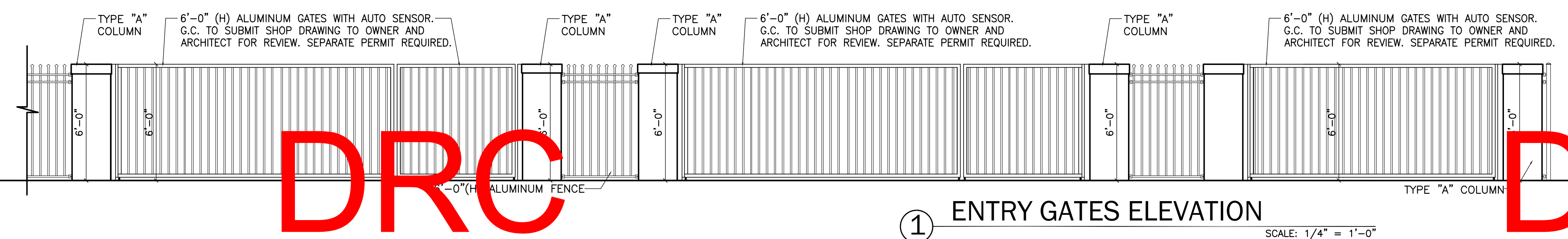
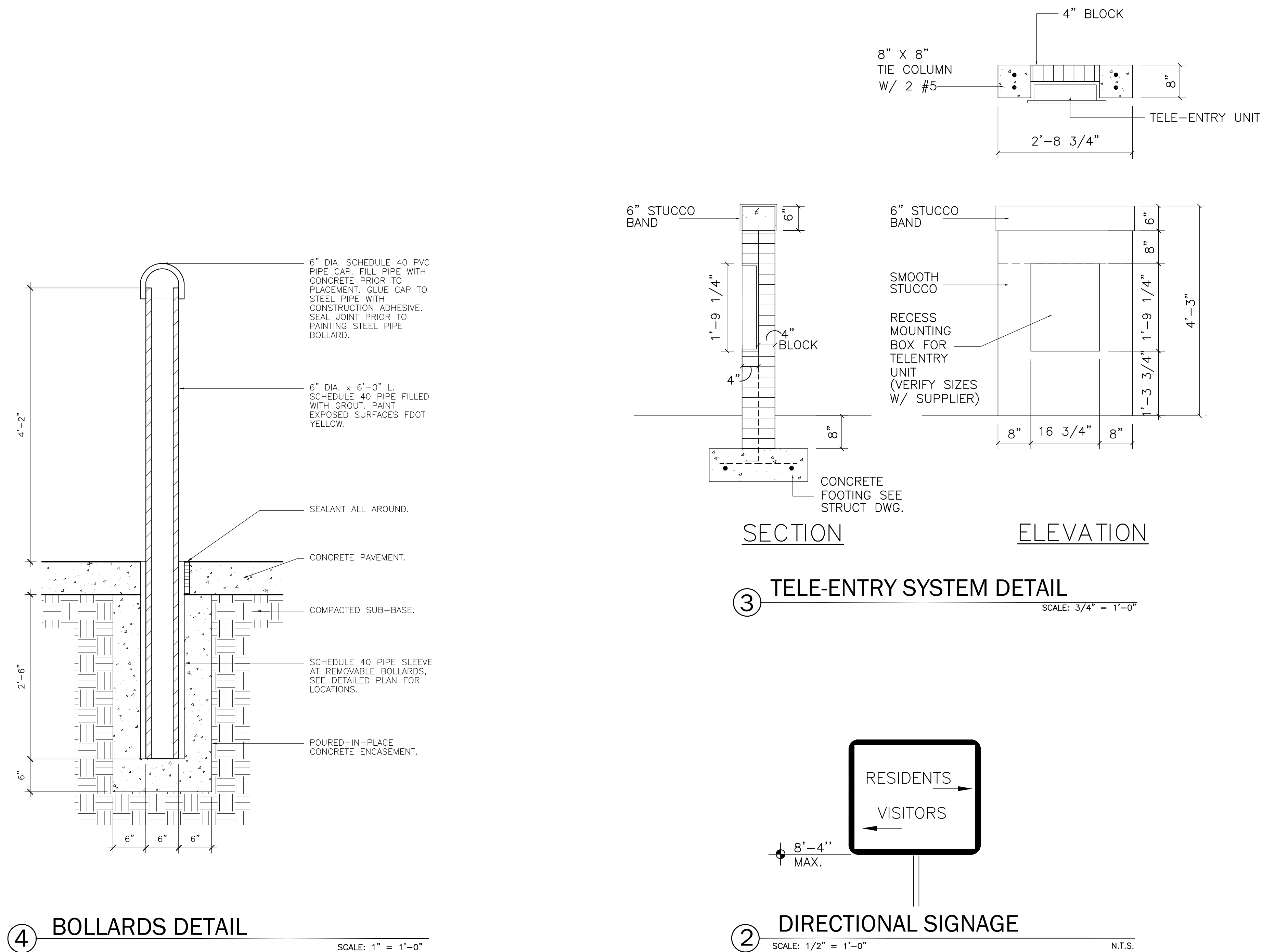
COPYRIGHT 2001 BURGOS, LANZA & ASSOCIATES
ALL RIGHTS RESERVED. NO PART OF THIS PUBLICATION
INSTRUMENTS OF SERVICE, NOT TO BE REPRODUCED
OR TRANSMITTED IN ANY FORM OR BY ANY MEANS,
ELECTRONIC OR MECHANICAL, INCLUDING PHOTOCOPYING,
RECORDING, OR BY ANY INFORMATION STORAGE AND
RETRIEVAL SYSTEM, WITHOUT PERMISSION IN WRITING
FROM BURGOS, LANZA & ASSOCIATES

Pablo
Burgos

Digitally signed by Pablo Burgos
 cn=Pablo Burgos, o=Burgos
 Lanza & Assoc., ou=AR95925,
 email=pburgos@burgoslanza.co
 m, c=US
 Date: 2022.05.11 14:28:27 -04'00'

TE	11/09/21
AWN	CR
JECT No.	2203
ALE	AS-SHOWN

ENTRY GATES
ELEVATION
CAL 1/4" = 1'-0"



DRC

PZ22-12000008
8/17/2022

DRC

PZ22-12000008
6/15/2022